

**Robust yet Diverse Tropical Responses to Antarctic Meltwater Across Models**

Xiyue Zhang<sup>1</sup>, Ariaan Purich<sup>2</sup>, Clara Deser<sup>3</sup>, and Andrew Pauling<sup>4,5</sup>

<sup>1</sup>Department of Physics, University of Nevada, Reno, USA.

<sup>2</sup> School of Earth, Atmosphere and Environment, and ARC Special Research Initiative for Securing Antarctica's Environmental Future, Monash University, Clayton, Kulin Nations, VIC, Australia.

<sup>3</sup>National Center for Atmospheric Research, Boulder, CO, USA.

<sup>4</sup>Department of Physics, University of Otago, Dunedin, New Zealand.

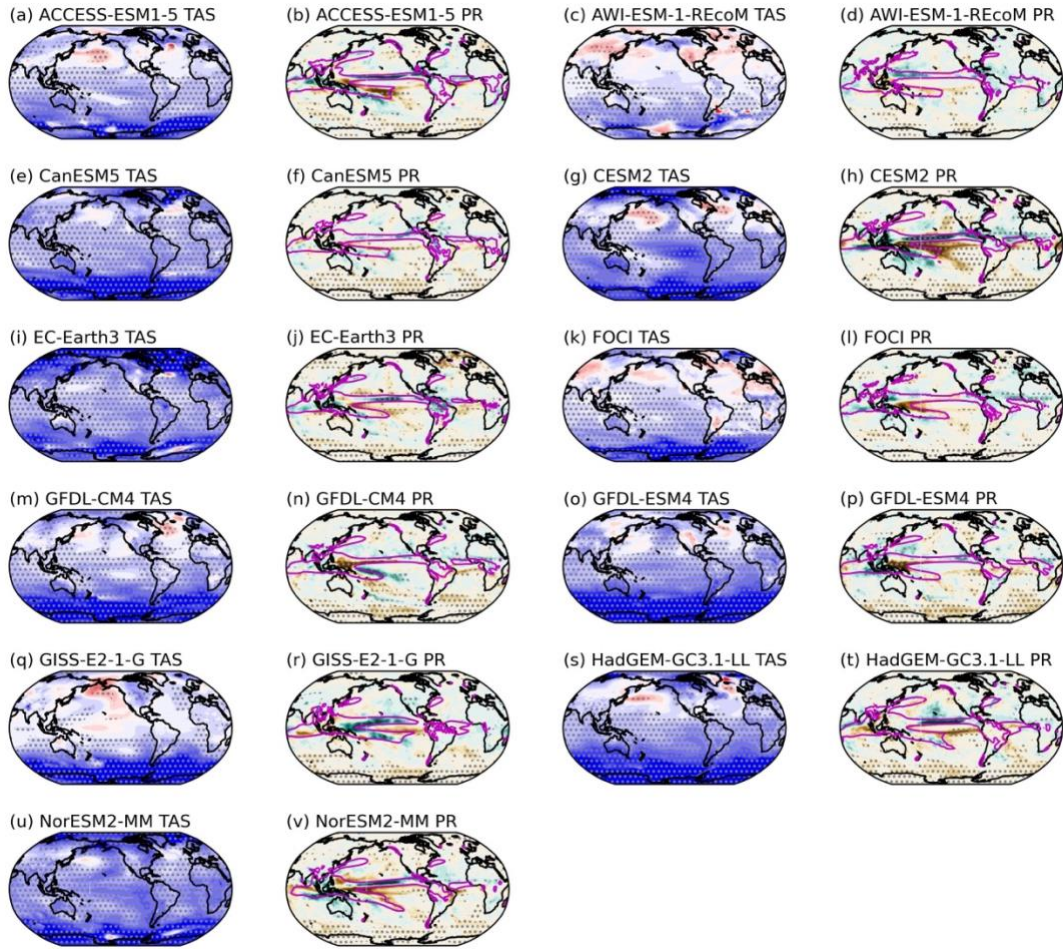
<sup>5</sup>Antarctic Research Centre, Victoria University of Wellington, Wellington, New Zealand.

**Contents of this file**

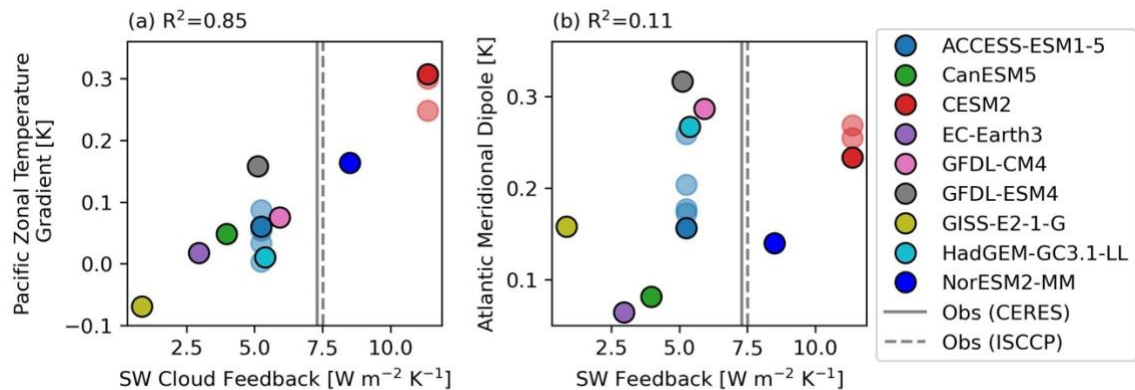
Figures S1 to S4

**Introduction**

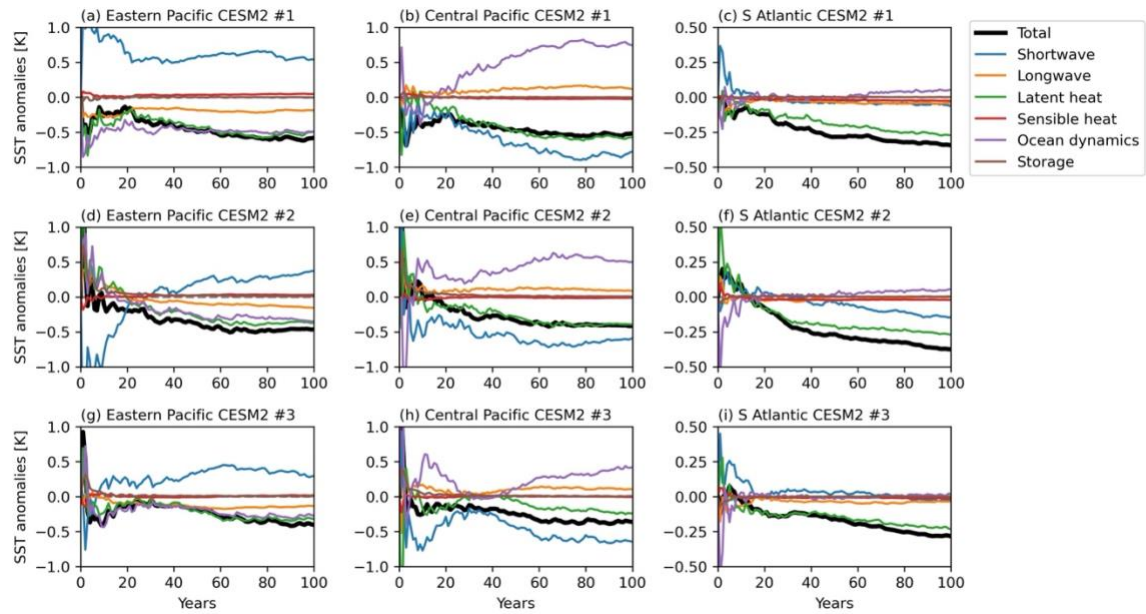
We provide additional figures in support of the manuscript.



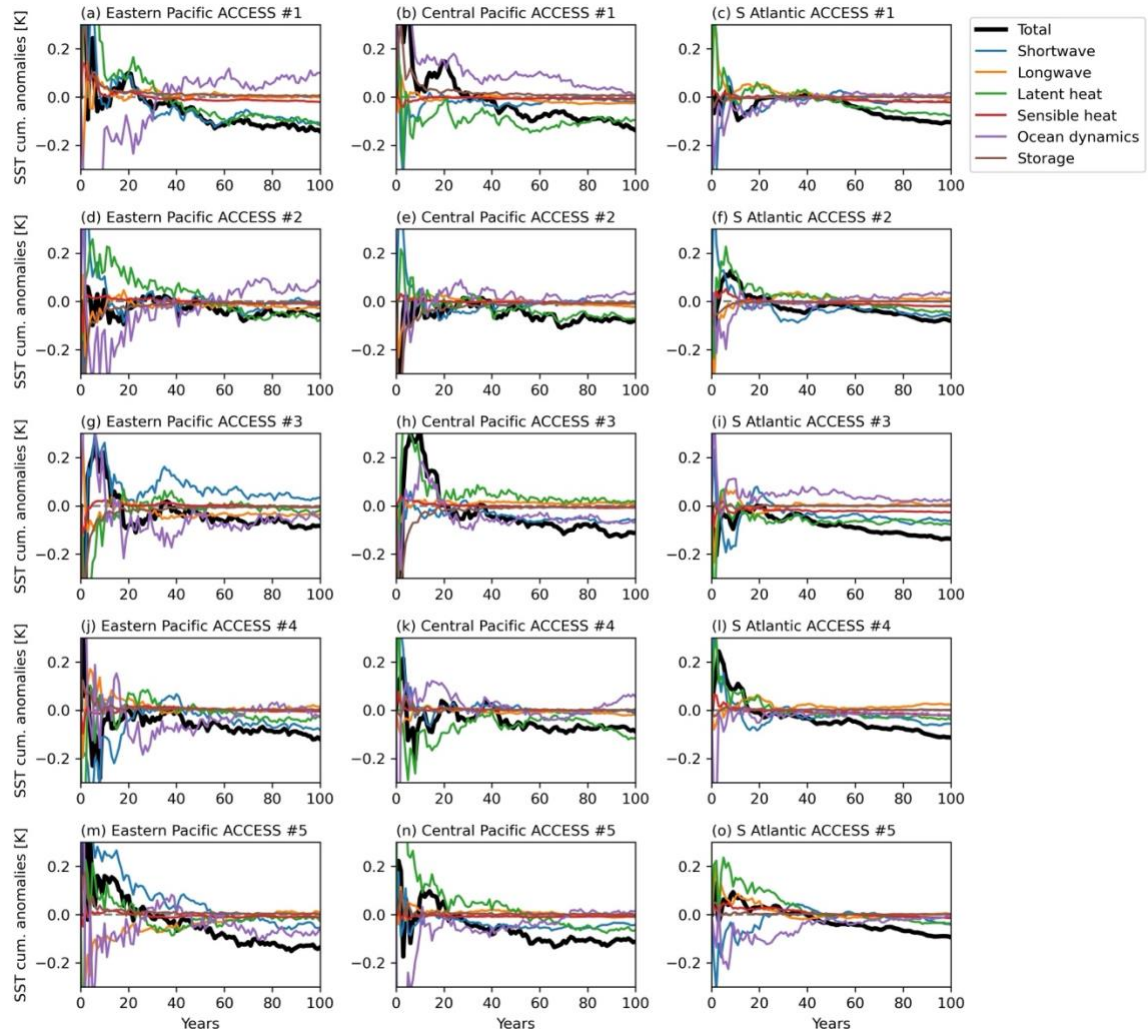
**Figure S1.** Surface air temperature and precipitation *antwater* response from individual models. Stippling shows statistically significant response at 95% confidence interval based on two-sided student  $t$  test. Magenta contour shows the climatological precipitation of 5 mm/day from  $piControl$  simulations. When multiple ensemble members are available, only the first ensemble member is shown.



**Figure S2.** Same as Figure 3, but showing the absolute temperature response without normalization.



**Figure S3.** Surface heat budget time series for CSM2 individual ensemble members. Left column shows the budget for equatorial eastern Pacific. Middle column shows the budget for central equatorial Pacific. Right column shows the budget for tropical South Atlantic. See Figure 4 for definitions of the regions.



**Figure S4:** Surface heat budget time series for ACCESS-ESM1-5 individual ensemble members. The left column shows the budget for the equatorial eastern Pacific. The right column shows the budget for the tropical South Atlantic.