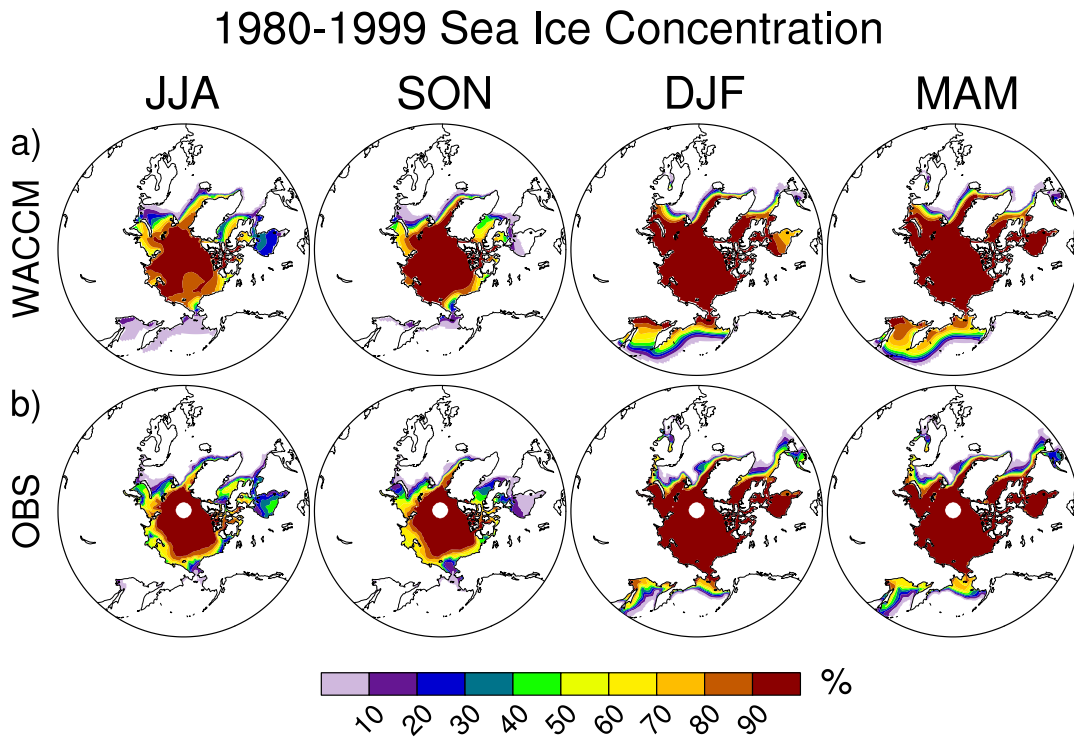


# Supplementary Materials for “Mechanisms of Stratospheric and Tropospheric Circulation Response to Projected Arctic Sea Ice Loss”

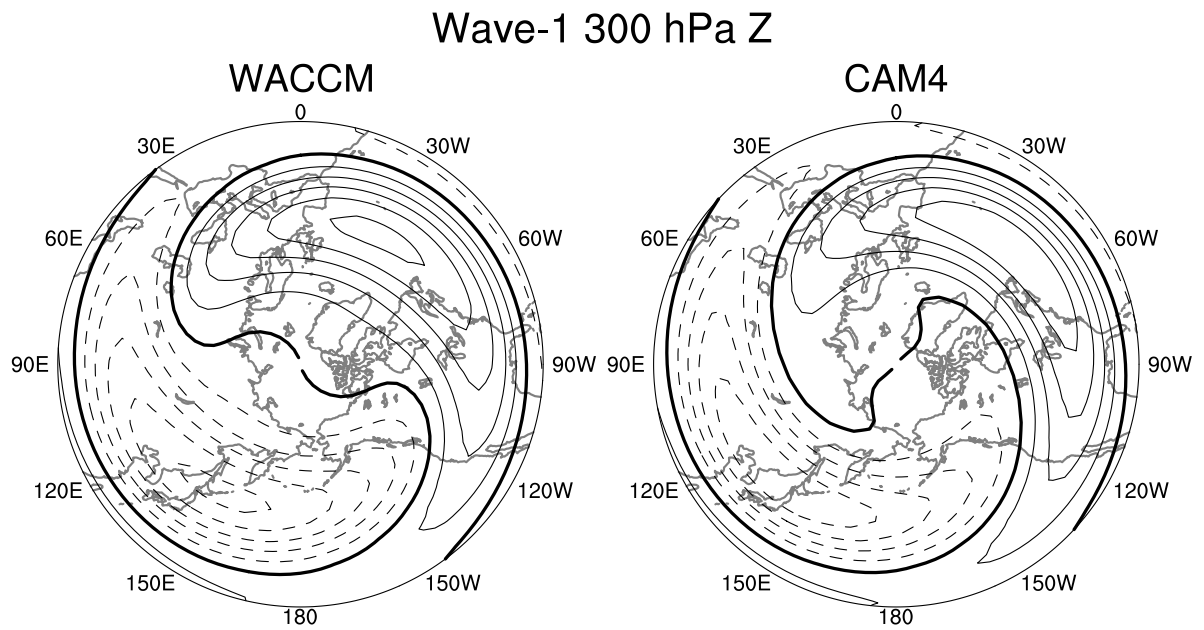
Lantao Sun, Clara Deser and Robert A. Tomas



**Fig. S1.** Seasonal cycle of sea ice concentration (SIC; %) averaged over 1980-1999 for a) fully-coupled WACCM and b) observations. The SIC observations are derived from satellite data and obtained from National Snow & Ice Data Center (Comiso, 2000).

## Reference:

Comiso, J. C. 2000, updated 2014. Bootstrap Sea Ice Concentrations from Nimbus-7 SMMR and DMSP SSM/I-SSMIS. Version 2. Boulder, Colorado USA: NASA National Snow and Ice Data Center Distributed Active Archive Center.



**Figure S2:** December-January climatological wave-1 geopotential height (gpm) at 300hPa in (left) WACCM and (right) CAM4. The contour interval is 30gpm.